

## Installing Aerosports Stock Struts 2<sup>nd</sup> Gen IS / 3<sup>rd</sup> GS



1. Disassemble Struts



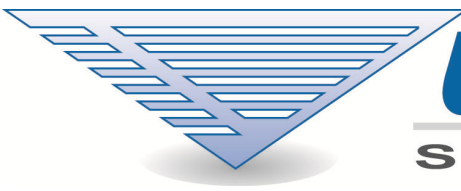
3. It is a VERY tight fit, Will take some force to pop loose



2. Hit Spring Perch with a hammer to pop it off



4. Set Stock Perch Aside



5. Drill Spot welds on upper bump stop cup to strut mount.



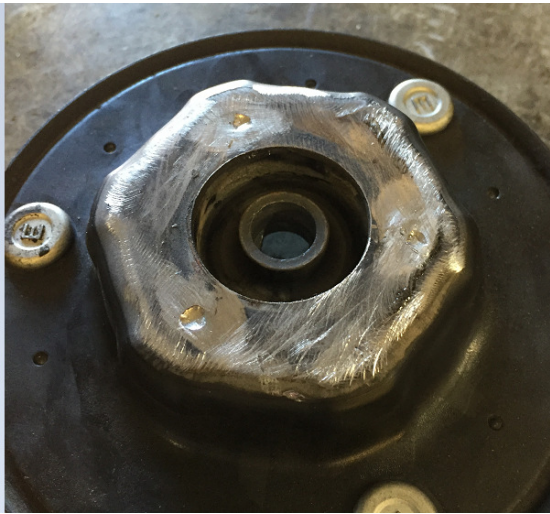
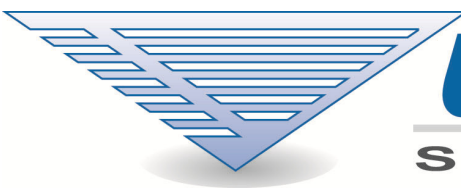
7. Wedge the two pieces apart to finish breaking the welds



6. Not trying to drill through into the strut mount, just through most of the weld.



8. Separate the two pieces



9. Sand the remaining weld portions down



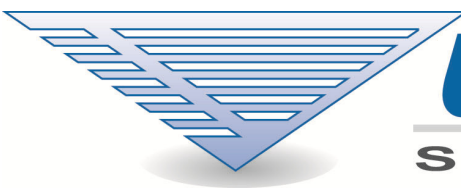
11. Assemble strut and lower bag bracket



10. Some Struts are large and it's a VERY tight fit into the mount. Light sanding on the end of the strut will make assembly a lot easier.



12. If your strut is VERY tight, some persuasion while supporting the bracket will help drive the strut into the mount.



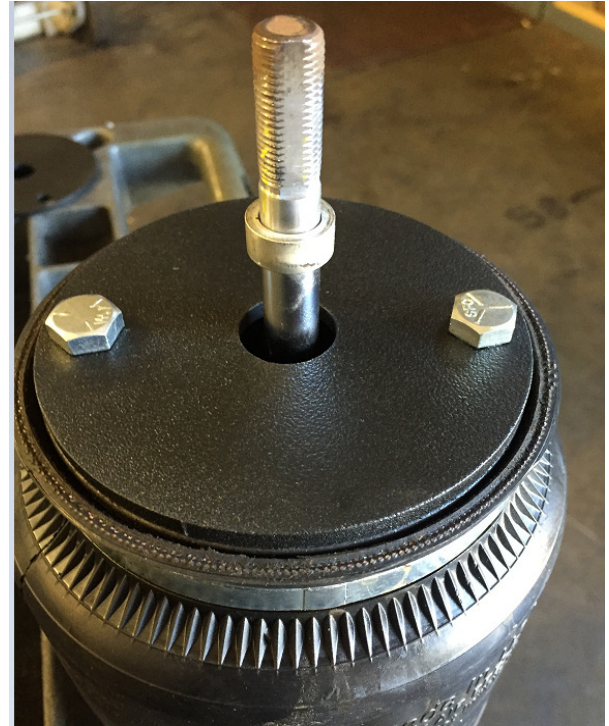
# Universal Air

## SUSPENSION COMPANY

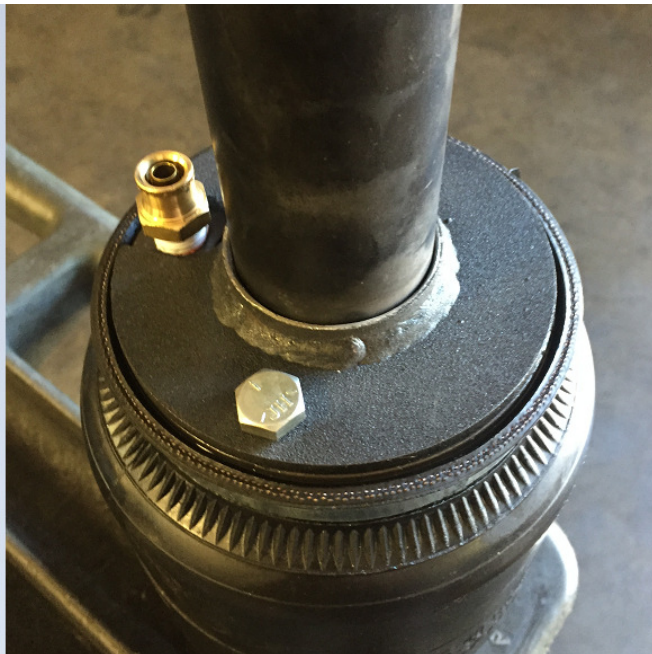
wrench. Overtightening will cause the cap to crack.



13. Looking from the top, you should see the shock fully seated upto the bottom of the mount.



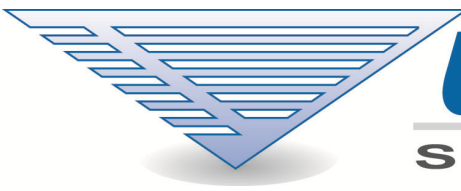
15. Assemble top bag mount onto the bag



14. Assemble your bag with your leak tested fitting already installed. When installing the fitting only go hand tight and 1 turn with a



16. Re-attach Upper strut Mount



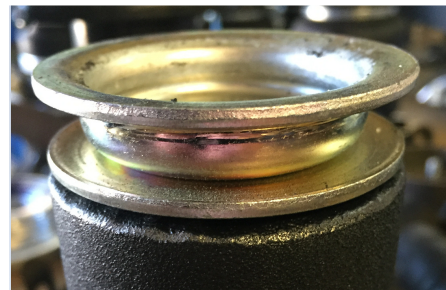
17. After stripping the rear strut bare, take the bump stop and remove the metal washer.



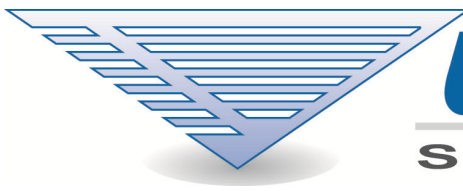
18. Place it into the upper bag bracket with the bump stop nipple facing the mount



19. Drive in the washer into the mount



20. Until Fully seated



21. Assemble mount on top of bag and plate on bottom of bag with leak tested 90 degree fitting installed

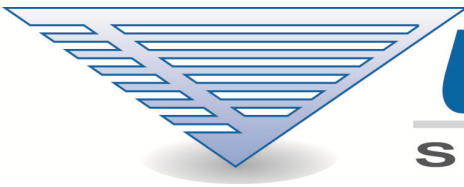


23. Slide oem upper strut mount over bag/strut assembly and re-install top bushing/washer/retaining nut



22. Place OEM bushing on top of washer





# *Universal Air*

---

S U S P E N S I O N   C O M P A N Y

24. Completed assemblies are ready to be installed.